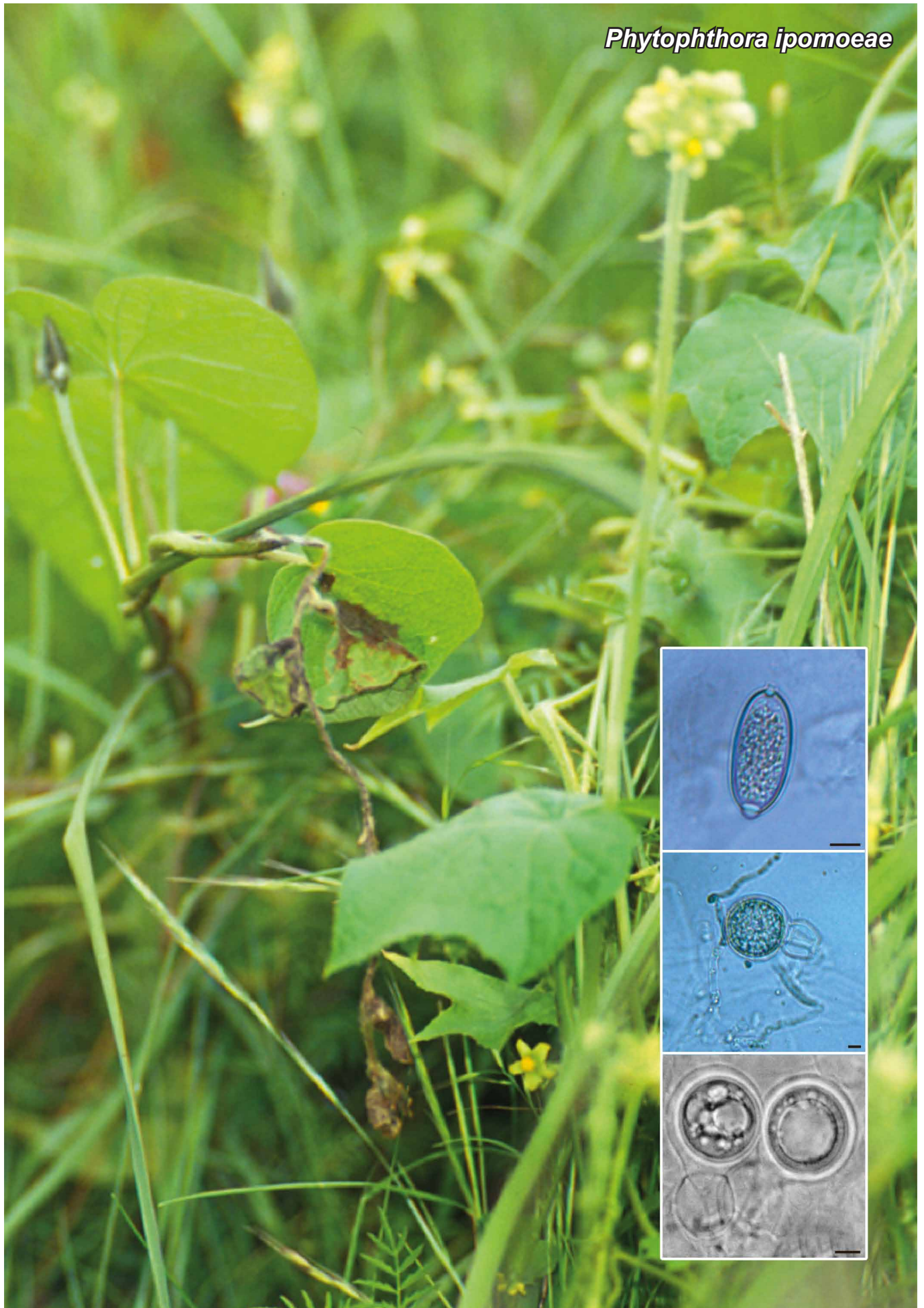


*Phytophthora ipomoeae*

Fungal Planet 197 – 26 November 2013

## ***Phytophthora ipomoeae* Flier & Grünwald, sp. nov.**

*Etymology.* Named after its host plant, *Ipomoea longipedunculata*.

*Mycelial colonies* grow well on Rye A agar. Minimum growth at approximately 11 °C, optimum at 20 °C and maximum at 25 °C. *Hyphae* non-septate and freely branching, (4–)5.5 (–7.5) µm diam. *Sporangiophores* aerial, sparsely formed on rye agar with compound-sympodial and intermediate branches, with swellings where sporangia emerge. *Sporangia* semi-papillate, ellipsoid or obovoid, caducous with short pedicel, on average 39 µm long (range 35–47.5 µm), with a length/width ratio of 1.9, germinating directly with germ tubes or indirectly with 4–8 zoospores. *Antheridia* amphigynous, average length 19 µm, ratio of length/width 1.3. *Oogonia* smooth-walled, average diam 32.5 µm, with tapered base. *Oospores* smooth-walled, rarely tinted yellow, almost filling the oogonial cavity, average diam 28.8 µm. Isolates homothallic.

*Typus.* MEXICO, Toluca, on leaves of *Ipomoea longipedunculata* (Convolvulaceae), 1999, W.G. Flier & N.J. Grünwald (holotype CBS H-21401, culture ex-type CBS 109229 = PIC 99169 = MUCL 30219, ITS sequence GenBank AY770742, MycoBank MB805536).

*Notes* — The holotype description of this previously published species *P. ipomoeae* Flier & Grünwald was invalid and is corrected here (Flier et al. 2002). The species has more recently also been described on *Ipomoea purpurea* (Badillo-Ponce et al. 2004).

*Colour illustrations.* Symptoms of infection of *P. ipomoeae* on *Ipomoea longipedunculata* growing in a weed patch on a hill in Metepec, Mexico; sporangium and oospores of *P. ipomoeae* produced in culture. Scale bars = 10 µm.

Niklaus J. Grünwald, USDA Agricultural Research Service, Horticultural Crops Research Laboratory, 3420 NW Orchard Ave., Corvallis OR 97330, USA; e-mail: grunwaln@science.oregonstate.edu