

Fungal Planet 646 – 20 December 2017

Phyllosticta catimbauensis G.R. Araújo-Magalhães, J.D.P. Bezerra, A.R. Machado, Souza-Motta & K.A. Moreira, *sp. nov.*

Etymology. Name refers to the Catimbau National Park, a protected area of the Brazilian tropical dry forest where this fungus was isolated as endophyte from *Mandevilla catimbauensis*.

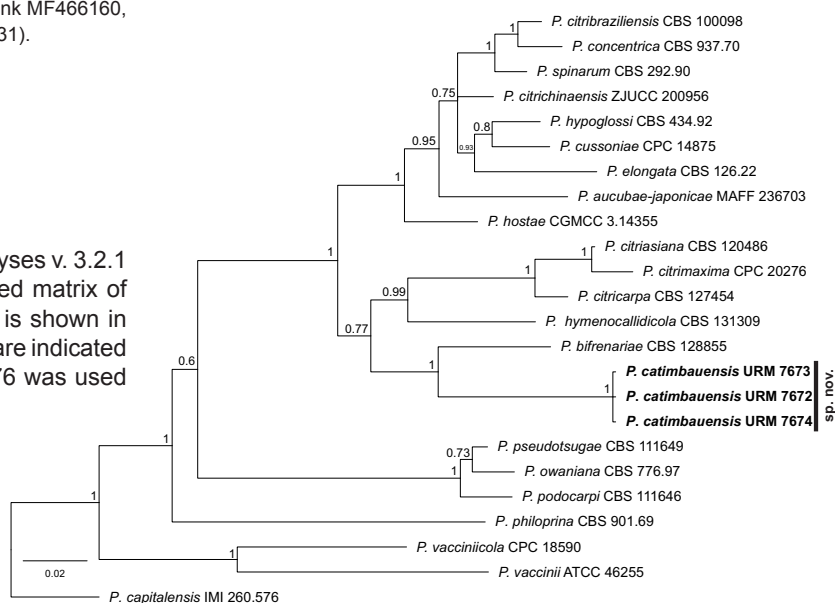
Classification — *Phyllostictaceae*, *Botryosphaeriales*, *Dothi-deomycetes*.

Conidiomata pycnidial, solitary or aggregated, dark brown to black, erumpent, globose to subglobose, 160–280 µm diam, exuding hyaline to crystalline conidia masses; wall of medium brown thick-walled cells of *textura angularis*. **Conidiophores** hyaline, smooth, 0–1-septate, densely aggregated, cylindrical, reduced to conidiogenous cells, or with one supporting cell, that can be branched at the base. **Conidiogenous cells** terminal, subcylindrical to ampulliform, hyaline, smooth, 9.5–10.5 × 3–3.5 µm; proliferating several times percurrently at apex. **Conidia** (8.5–)9.5(–10.5) × 5.5–6 µm, solitary, hyaline, aseptate, thin- and smooth-walled, granular, ellipsoid, globose, subglobose, broadly ellipsoidal or obovoid, tapering towards a narrow truncate base, 2.5–3.5 µm diam, enclosed in a persistent mucoid sheath, 1.5–2.5 µm thick, and bearing a hyaline, apical mucoid appendage, 3–6.5 × 1–1.5 µm, flexible, unbranched, tapering towards an acutely rounded tip. **Spermatia** aseptate, dumbbell-shaped, 5.5–9.5 × 1.5–2 µm.

Culture characteristics — Colonies covering Petri dishes after 2 mo at 25 °C. On PDA, colonies with irregular margins, and sparse aerial mycelium, surface grey to dark grey and reverse olivaceous-grey to dark grey. On MEA, surface yellowish to dark brown and reverse amber to buff. On OA surface and reverse grey to dark grey.

Typus. BRAZIL, Pernambuco state, Buíque municipality, Catimbau National Park (S8°36'35" W37°14'40"), as endophyte from *Mandevilla catimbauensis* (*Apocynaceae*), May 2015, G.R. Araújo (holotype URM 90488, culture ex-type URM 7672; ITS, LSU, *actA* and *tef1* sequences GenBank MF466160, MF466163, MF466157 and MF466155, MycoBank MB822131).

Bayesian inference analysis conducted with MrBayes v. 3.2.1 at CIPRES science gateway using a concatenated matrix of *actA*, *tef1* and ITS sequences. The new species is shown in **bold**. Bayesian posterior probabilities above 0.60 are indicated at the nodes. *Phyllosticta capitalensis* IMI 260.576 was used as outgroup.



Colour illustrations. *Mandevilla catimbauensis* in the Catimbau National Park; conidiomata; conidiogenous cells; spermatia, and conidia. Scale bars = 10 µm.

Gianne R. Araújo-Magalhães & Keila A. Moreira, Programa de Pós-Graduação em Biociência Animal, Universidade Federal Rural de Pernambuco, Recife, Brazil; e-mail: gianne.rizzuto@gmail.com & moreirakeila@hotmail.com
 Jadson D.P. Bezerra, Alexandre R. Machado & Cristina M. Souza-Motta, Departamento de Micologia Prof. Chaves Batista, Universidade Federal de Pernambuco, Recife, Brazil; e-mail: jadsondpb@gmail.com, alexandrerm.agro@yahoo.com.br & cristina.motta@ufpe.br